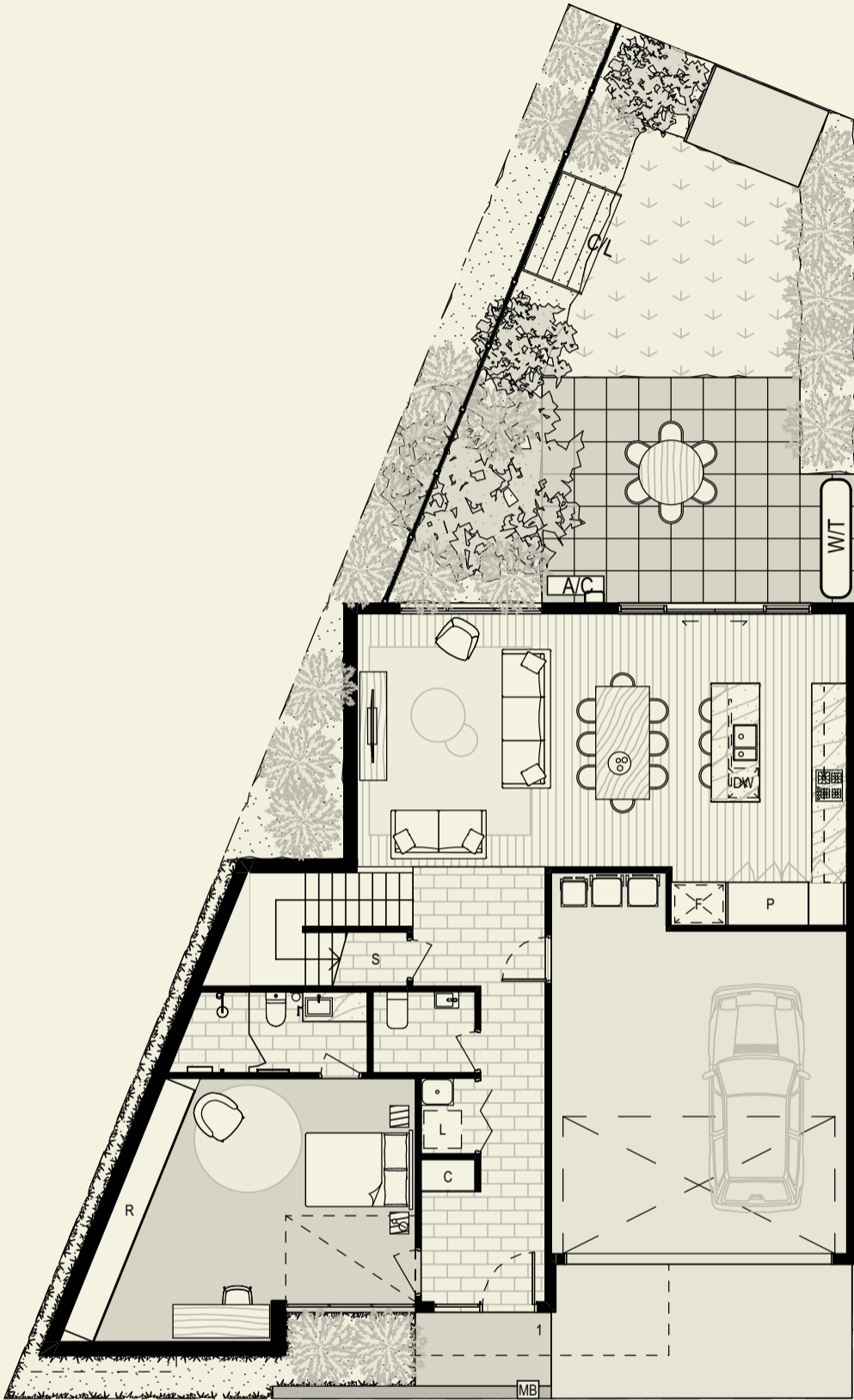
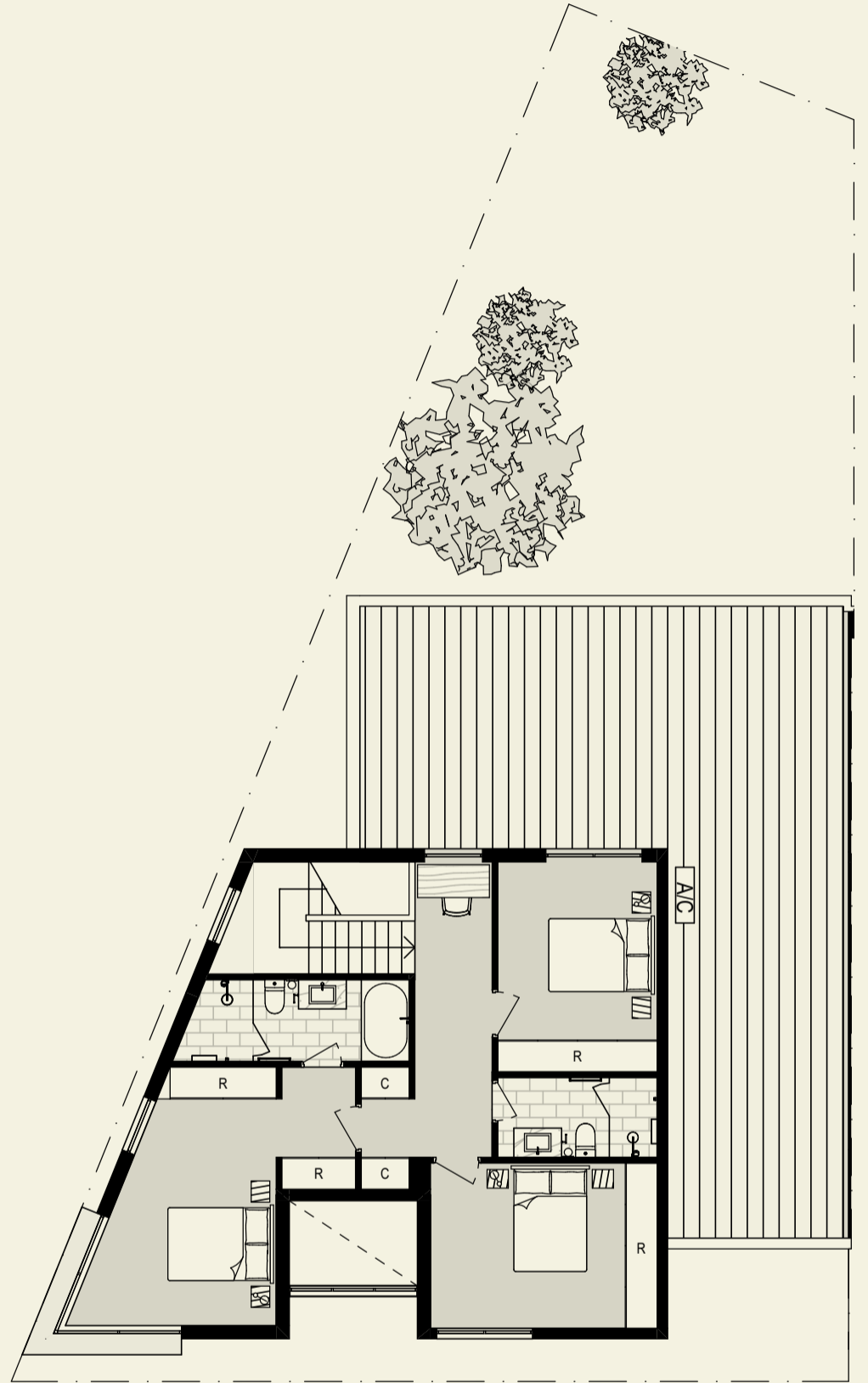


Townhome Type E

4 bedrooms & 3 bathrooms



Ground floor



First floor

Bedroom	4	Ground floor	117.5m ²
Bathroom	3	First floor	77.9m ²
Powder room	1	Garage	37.4m ²
Living	1	Driveway	13.8m ²
Garage car space	2	Front yard	33.1m ²
		Rear yard	67.3m ²
		Total	347m ²



Contact

thebottleworksgeelong.com.au